

CorrectEnglish Browser Extensions

CorrectEnglish Browser Extensions

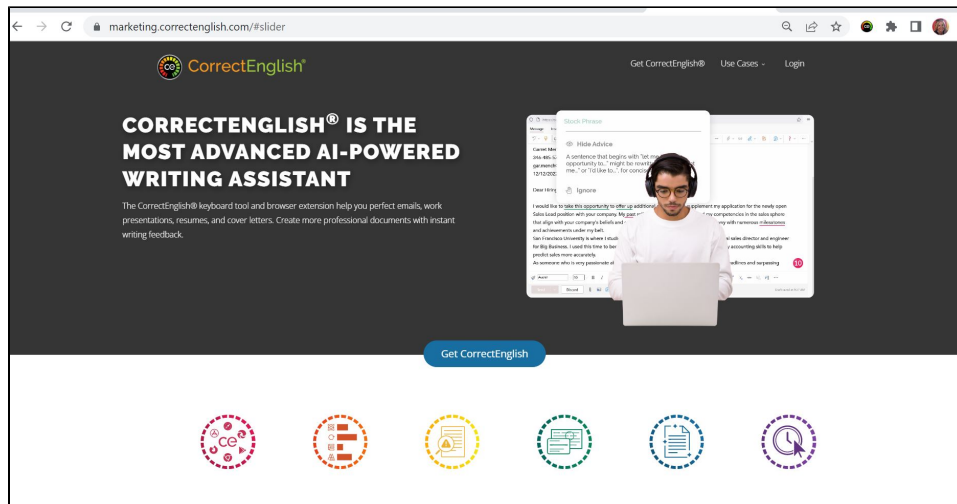
CorrectEnglish can now be added as an extension to your web browser. Once installed, your personalized CE bubble identifies writing errors and makes intelligent suggestions on your everyday writing wherever it is done on the web. It is smart enough to flag common ESL errors and even understand the misuse of commonly confused words, such as affect and effect.

The CE consumer bubble looks like this:

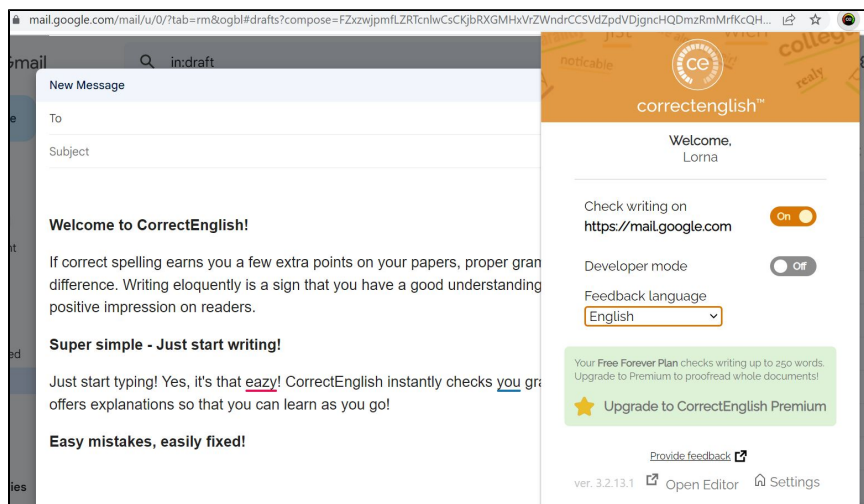


It is easy to install the CE browser extension. Just click on the "Add CorrectEnglish to Chrome (Firefox, Edge or Safari) located on the www.correctenglish.com homepage. You will be guided through the install extension process. Anyone can experience the power of CorrectEnglish for free to check up to 250 words.

To experience the full power of the CorrectEnglish, we recommend upgrading to the CE Complete Web Edition. The subscription plans and pricing are available at <http://correctenglish.com/#plans>.



The icon will be located in the upper right-hand corner of your browser ribbon. Web-based text areas will display the CE icon in the lower right-hand corner. CorrectEnglish will check your writing in real-time!



Existing CorrectEnglish Subscribers

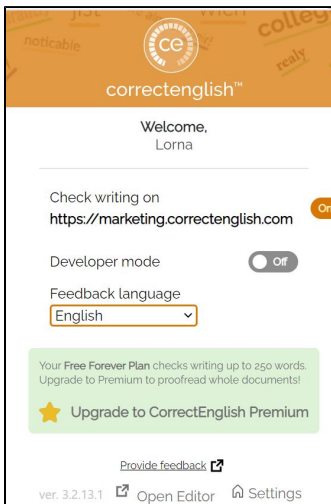
If you have an active account, just install the CE browser extension and login with your CE credentials. You can easily toggle over to the Complete Edition from the extension page or click on

<https://login.correctenglish.com/>

Can I turn off the Extension?

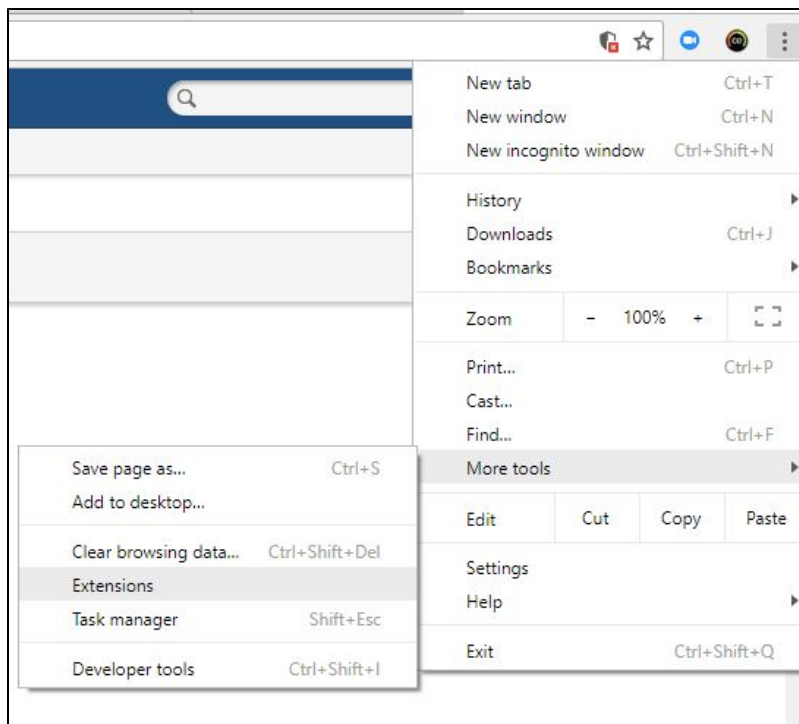
There may be occasions when you do not want to use the extension.

- Click on Check writing on. This will turn off the extension on the domain.



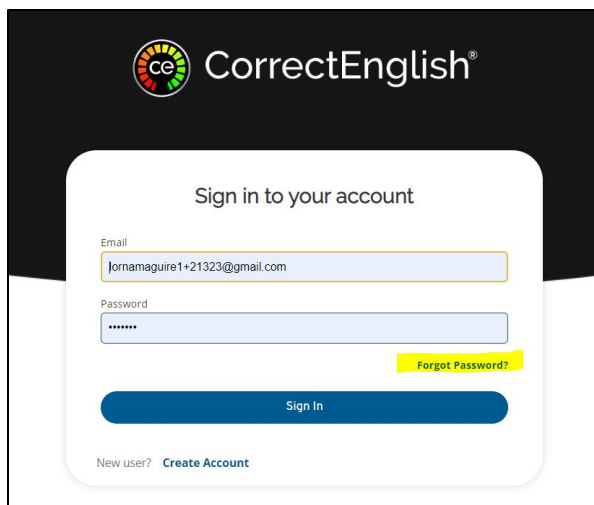
Can I uninstall the extension?

The extension can be uninstalled by locating your browser's settings to locate and uninstall extensions.



What if I forget my Password?

Click on the "Forgot password" link to enter your email. A link to reset your password will be emailed to you.



The image shows a login form for CorrectEnglish. At the top, the logo consists of a circular icon with the letters 'ce' and the text 'CorrectEnglish®'. Below the logo, the heading 'Sign in to your account' is centered. The form contains two input fields: 'Email' with the value 'jornamaguire1+21323@gmail.com' and 'Password' with masked characters. A blue 'Sign In' button is positioned below the password field. To the right of the password field is a yellow 'Forgot Password?' link. At the bottom left, there is a link for 'New user? Create Account'.

CorrectEnglish®

Sign in to your account

Email
jornamaguire1+21323@gmail.com

Password

[Forgot Password?](#)

[Sign In](#)

New user? [Create Account](#)