

September 22nd, 2014 Release Notes

September 22nd, 2014

The iSEEK team is happy to announce recent enhancements based on user feedback. This release we focused on enhancing visual functionality and performance, along with a few other improvements. We think you'll love how easy it now is to:

- **Select** and customize your own color themes
- **Filter and Associate** multiple tables and charts with one another
- **Highlight** key results in your tables
- **Customize** your own Avatar

Highlights of new iSEEK release

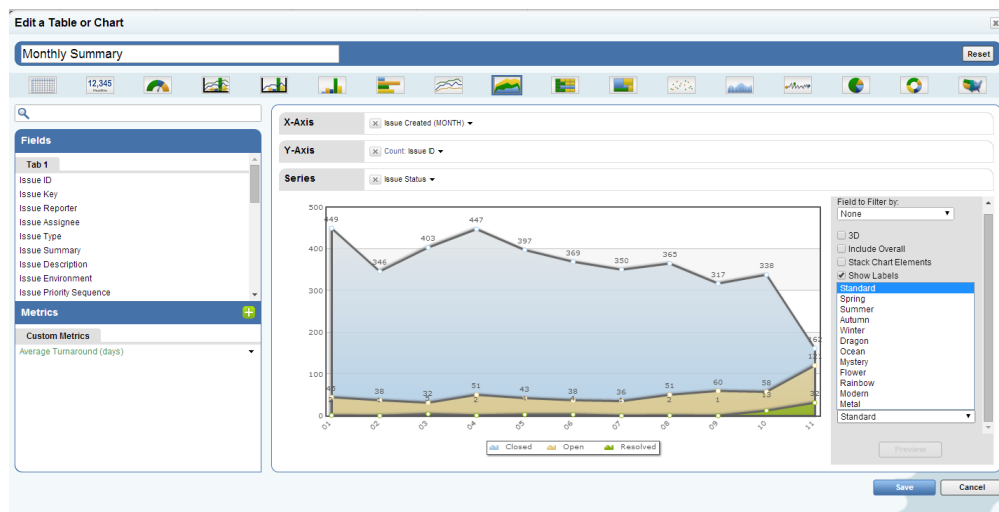
- [Select Your Own Chart Themes](#)
- [New Dashboard Chart Associations](#)
- [Customize Your Personal Avatar](#)
- [Highlight Key Results In Your Tables](#)
- [Highlighted Column Count](#)
- [Most Recently Added Data Filter](#)

★ Over 6 stories completed

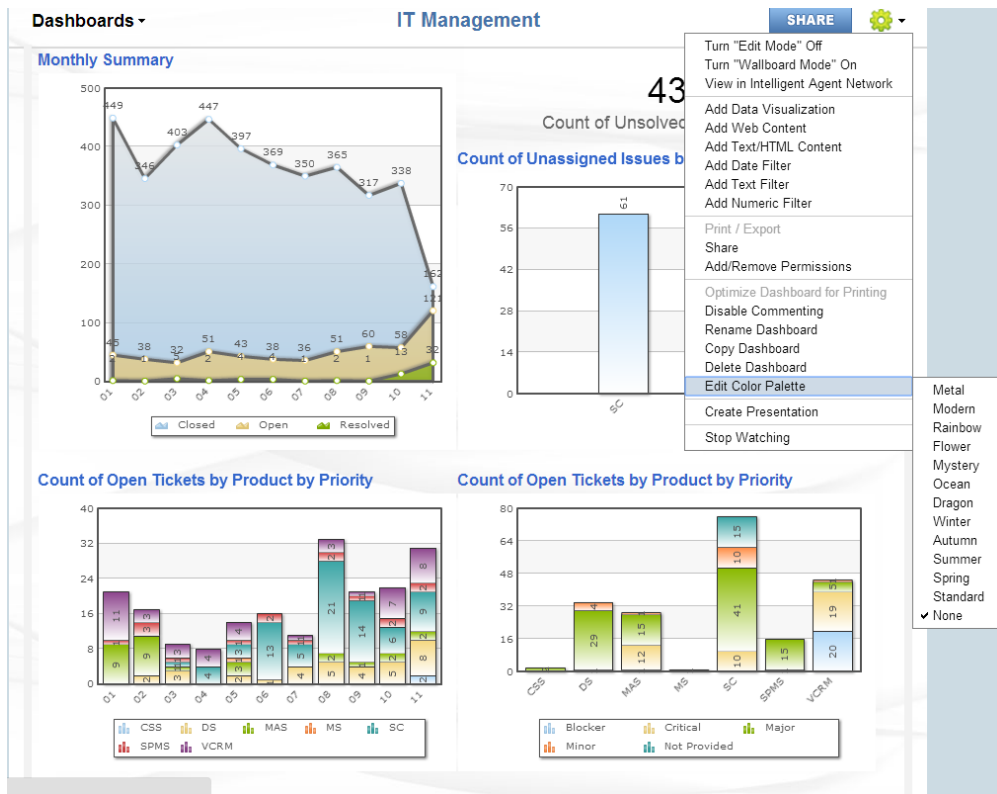
1

Select Your Own Chart Themes

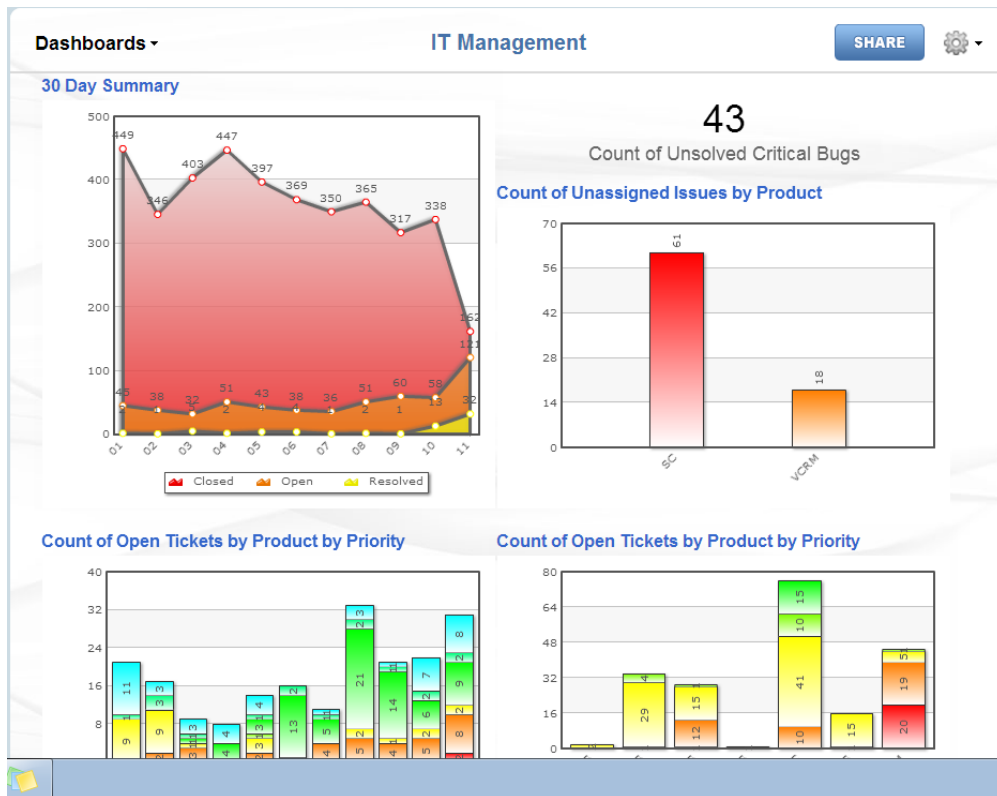
Users can now select their own color themes when creating new charts. This menu can be accessed on the bottom left of the visualizer.



Users may also change their entire chart theme for dashboard. Simply click the sprocket and access the color palette menu to select from a variety of pre-populated themes



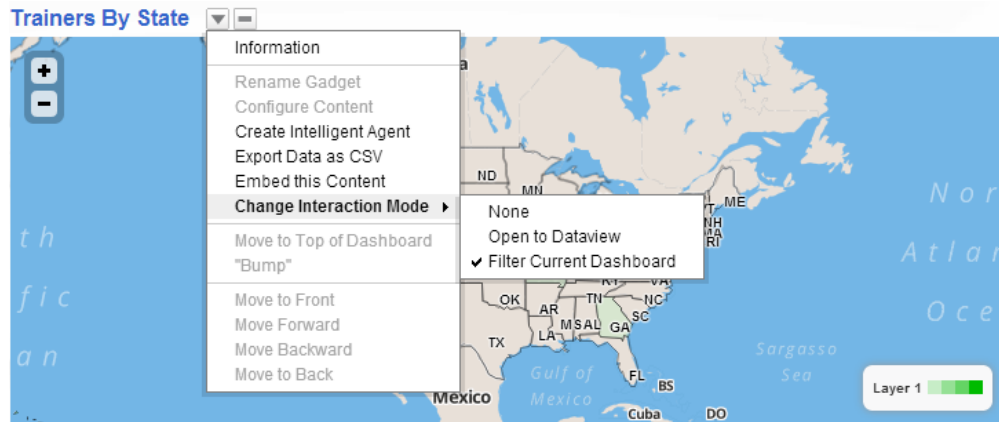
For example I will select the "Rainbow" color theme.



New Dashboard Chart Associations

As part of a dashboard a user may choose to use a specific chart as an in place "filter", allowing users to toggle selections and change the results of other charts within the dashboard

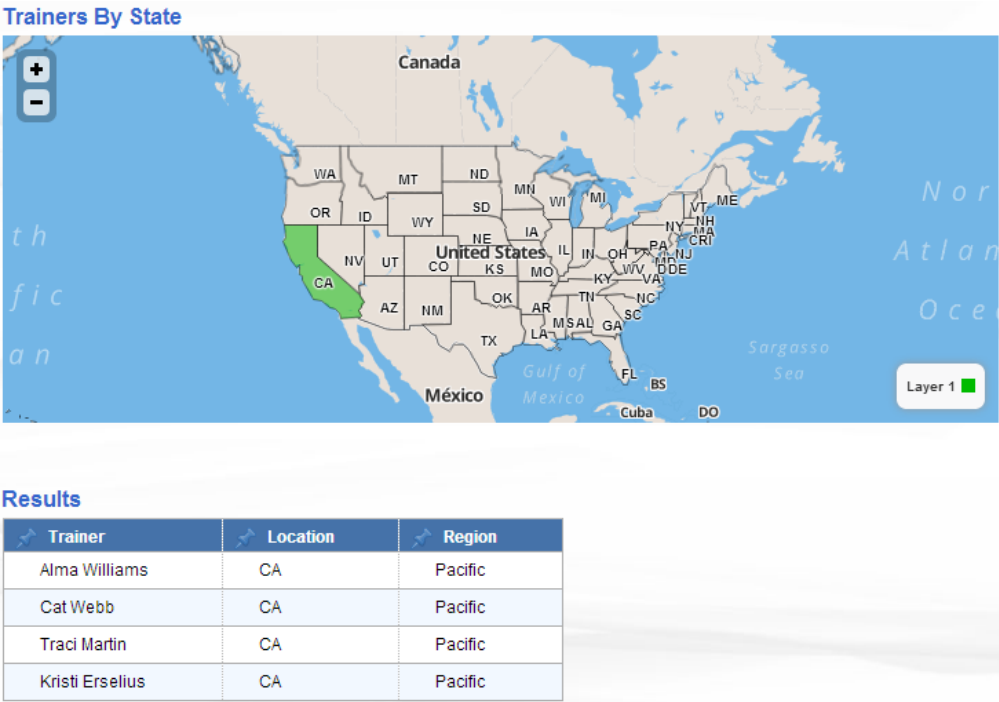
- Click the down arrow on the chart you would like to make a "filter"
- Access the menu called "Change Interaction Mode", and select "Filter Current Dashboard"



Results

Trainer	Location	Region
Alma Williams	CA	Pacific
Shannon Chang	Hawaii	Hawaii
Annie Williams	MO	Central
Dee Foley	NY	East
Mike Daniel	GA	East
Melinda Cunningham	IL	Central
Cat Webb	CA	Pacific
Brenda Hayes	ID	Mountain
Suzanne Kingsford	UT	Mountain
Nina Hansen	CT	East

Once selected, the user can now click an element on the above map to filter the results of other tables and charts. For example I will select California on the above map



As we can see the below table is only showing data associated to California. The user can then click the element again to toggle back to a full view.


3

Customize Your Personal Avatar


The user interface has been made easier to make it easier to customize your personal Avatar.

- Simply access your User Profile from the default Avatar on the top right.
- Select "Change Avatar and use the drag and drop interface or browse for a new Avatar Image.

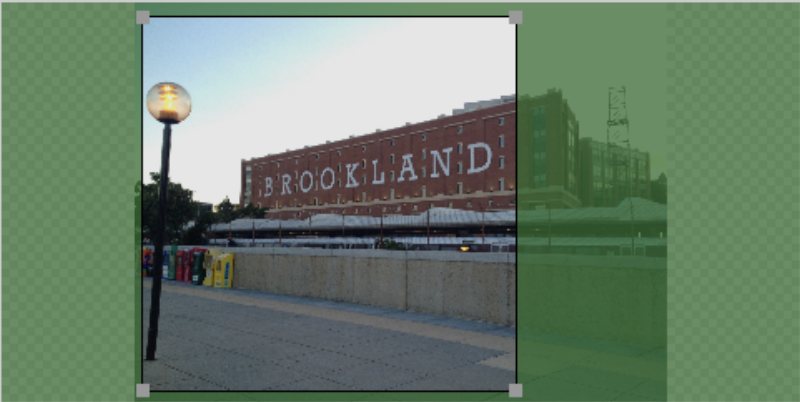
Pick an avatar for **Daniel**



Current Avatar



New Avatar



Crop the desired part of your image, and click save

Upload File

Apply

Reset

Cancel

Crop your Avatar image to the desired size and Apply the changes.

4

Highlight Key Results In Your Tables

User can now select a range of values to be highlighted in their table results. Once the table has been constructed simple access the small color wheel icon next to the numeric field of your choice.

ISseek models

Gross Profitability

Grouped

Show Row #: ☐
 Count Highlighted: ☒
 Record Limit:
 Show Records: in any
 Display Mode: Flat

	Price to Net Net	PEG Ratio	Trailing PEG Ratio	Gross Profitability	% of Fa
3787	5.366463	0.996667	0.000729	0.576992	207.65
4411	-0.196237	1.498919	0.327596	0	97.549
.6	-0.336384	5.7814	0.069321	0.504966	178.58
3475	2.357524	7.038462	0.005518	1.71	8.9462
1.0035	15.052904	0.576913	0.82098	0.619617	141.31
2822	139.39807	1.599248	0.647489	0.3	
1.8979	-3.855057	14.226804	0.043959	0.504112	183.63
1.5616	-0.436561	0.355131	0.110135	0	51.722
5826	4.268994		-0.645196	1.19976	29.854
2188	420.675447	10.9375	0.125341	0.808056	
1.7744	-1.193542	8.817463	0.939719	0.700354	113.37
1.2	1.650005		0.635306	0.650008	64.606

Save Cancel

I will select my Gross Profitability field. Once selected there are several options that can be selected

Configure Color Ranges

☐ No highlighting

☒ Highlight values within a range

Lower Limit: .5

Upper Limit: 100000

☐ Highlight the top values

☐ Highlight the entire row when this column is highlighted.

☐ Treat negatively towards the highlighted column count.

Save Cancel

	Trailing PEG Ratio	Gross Profitability	% of Fa
0.000729	0.576992	207.65	
0.327596	0	97.549	
0.069321	0.504966	178.58	
0.005518	1.71	8.9462	
0.82098	0.619617	141.31	
0.647489	0.3		
0.043959	0.504112	183.63	
0.110135	0	51.722	
-0.645196	1.19976	29.854	
0.125341	0.808056		
0.939719	0.700354	113.37	
0.635306	0.650008	64.606	

Save Cancel

- No Highlighting:** This will keep the column as normal with no changes
- Highlight values within a range:** Select a range where you would like to see the columns highlighted. Select two colors for a gradient effect or the same color to make the fields more noticeable.
- Highlight the top (or bottom) # of records:** Highlights the top or bottom number of records specified.
- Highlight entire column:** This selection allows users to highlight the entire row of data to view all associated data.
- Treat highlighted column as a negative:** When using the highlighted count, we can see the number of columns highlighted per row and apply a negative value to the selected column. (see highlighted count below)

5

Highlighted Column Count

Allows users to create a column that counts the number of columns highlighted by row.

iSeek models ▾

to Net Net	PEG Ratio	Trailing PEG Ratio	Gross Profitability	% of Fair Value	Highlight Count ▲	Rank
1463	0.996667	0.000729	0.576992	207.658646	5	5
6237	1.498919	0.327596	0	97.549458	4	24
6384	5.7814	0.069321	0.504966	178.589913	4	1589
1524	7.038462	0.005518	1.71	8.946291	4	22
12904	0.576913	0.82098	0.619617	141.316321	4	1296
19807	1.599248	0.647489	0.3		4	19
5057	14.226804	0.043959	0.504112	183.631574	4	460
6561	0.355131	0.110135	0	51.722077	4	47
1994		-0.645196	1.19976	29.854637	4	21
175447	10.9375	0.125341	0.808056		4	91
3542	8.817463	0.939719	0.700354	113.376445	4	656
0895		0.635396	0.950988	64.685193	4	589
061491	3.533333	-0.142617	0.11		3	17
3882	6.425773	0.76919	0.139108	169.039796	3	1757
1002	3.45622	0.51	0.200344	107.936921	3	1479

6

Most Recently Added Data Filter

For users with an incremental datafeed we have implemented a new filter for Most Recently added data. This option controls whether the current dataview includes all records or only the records added in the most recent datafeed. By default all records are shown.

Data was updated September 22.
[View More](#)

STATUS_CODE ▾

Search

☒ Filter by Most Recently Added

Current Stock Prices	Ben Graham Net Net Model	PEG Forward Model	PEG Trailing Model	Gross Profitability Model	Und
<input type="checkbox"/> STATUS_CODE 0 20385	<input type="checkbox"/> STATUS_MSG OK 20385	<input type="checkbox"/> COMPANY_NAME FREDDIE MAC 18 PG & E CORP 9 CONN LT & PWR 4.50 P... 8 ISHARES MSCIEMERGI... 8	<input type="checkbox"/> COMPANY_DESC NBB FGN 4338 NBB 3614 COM 1803 NBB COM 1471		
<input type="checkbox"/> CHANGE -2751.00 to 34.18	<input type="checkbox"/> PER_CHANGE -100.00 to 1900.00	<input type="checkbox"/> TICK 0 to 2	<input type="checkbox"/> DATE_TIME Date Only Specific From 01-01-2014 To 12-31-2014 <input type="checkbox"/> Update Automatically		